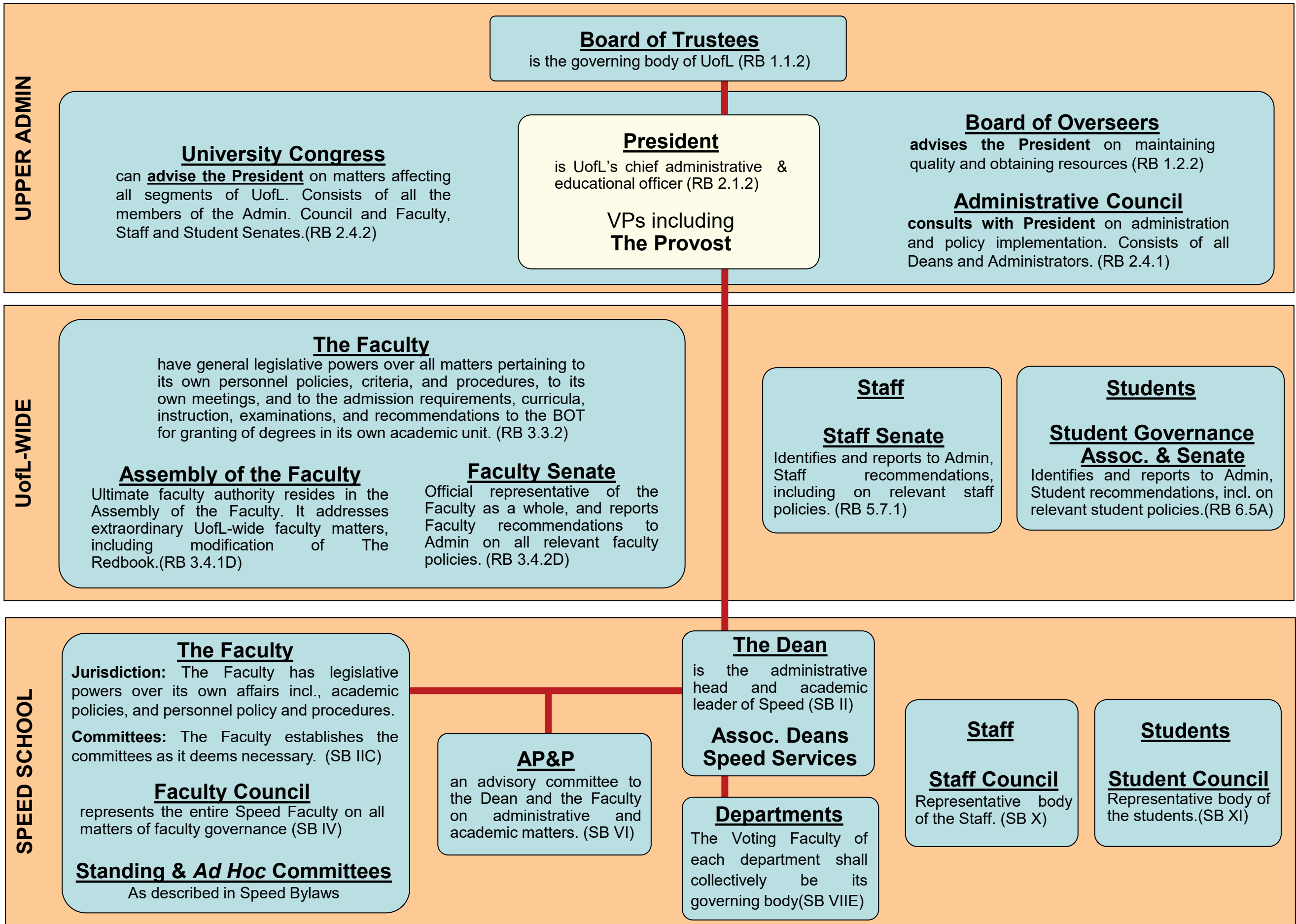


# UofL & Speed School Organizational Chart

According to The Redbook (RB) and Speed Bylaws (SB)



UPPER ADMIN

UofL-WIDE

SPEED SCHOOL

**Board of Trustees**  
is the governing body of UofL (RB 1.1.2)

**University Congress**  
can advise the President on matters affecting all segments of UofL. Consists of all the members of the Admin. Council and Faculty, Staff and Student Senates.(RB 2.4.2)

**President**  
is UofL's chief administrative & educational officer (RB 2.1.2)

VPs including  
**The Provost**

**Board of Overseers**  
advises the President on maintaining quality and obtaining resources (RB 1.2.2)

**Administrative Council**  
consults with President on administration and policy implementation. Consists of all Deans and Administrators. (RB 2.4.1)

**The Faculty**  
have general legislative powers over all matters pertaining to its own personnel policies, criteria, and procedures, to its own meetings, and to the admission requirements, curricula, instruction, examinations, and recommendations to the BOT for granting of degrees in its own academic unit. (RB 3.3.2)

**Assembly of the Faculty**  
Ultimate faculty authority resides in the Assembly of the Faculty. It addresses extraordinary UofL-wide faculty matters, including modification of The Redbook.(RB 3.4.1D)

**Faculty Senate**  
Official representative of the Faculty as a whole, and reports Faculty recommendations to Admin on all relevant faculty policies. (RB 3.4.2D)

**Staff**

**Staff Senate**  
Identifies and reports to Admin, Staff recommendations, including on relevant staff policies. (RB 5.7.1)

**Students**

**Student Governance Assoc. & Senate**  
Identifies and reports to Admin, Student recommendations, incl. on relevant student policies.(RB 6.5A)

**The Faculty**  
**Jurisdiction:** The Faculty has legislative powers over its own affairs incl., academic policies, and personnel policy and procedures.  
**Committees:** The Faculty establishes the committees as it deems necessary. (SB IIC)

**Faculty Council**  
represents the entire Speed Faculty on all matters of faculty governance (SB IV)

**Standing & Ad Hoc Committees**  
As described in Speed Bylaws

**AP&P**  
an advisory committee to the Dean and the Faculty on administrative and academic matters. (SB VI)

**The Dean**  
is the administrative head and academic leader of Speed (SB II)

**Assoc. Deans Speed Services**

**Departments**  
The Voting Faculty of each department shall collectively be its governing body(SB VIIIE)

**Staff**

**Staff Council**  
Representative body of the Staff. (SB X)

**Students**

**Student Council**  
Representative body of the students.(SB XI)